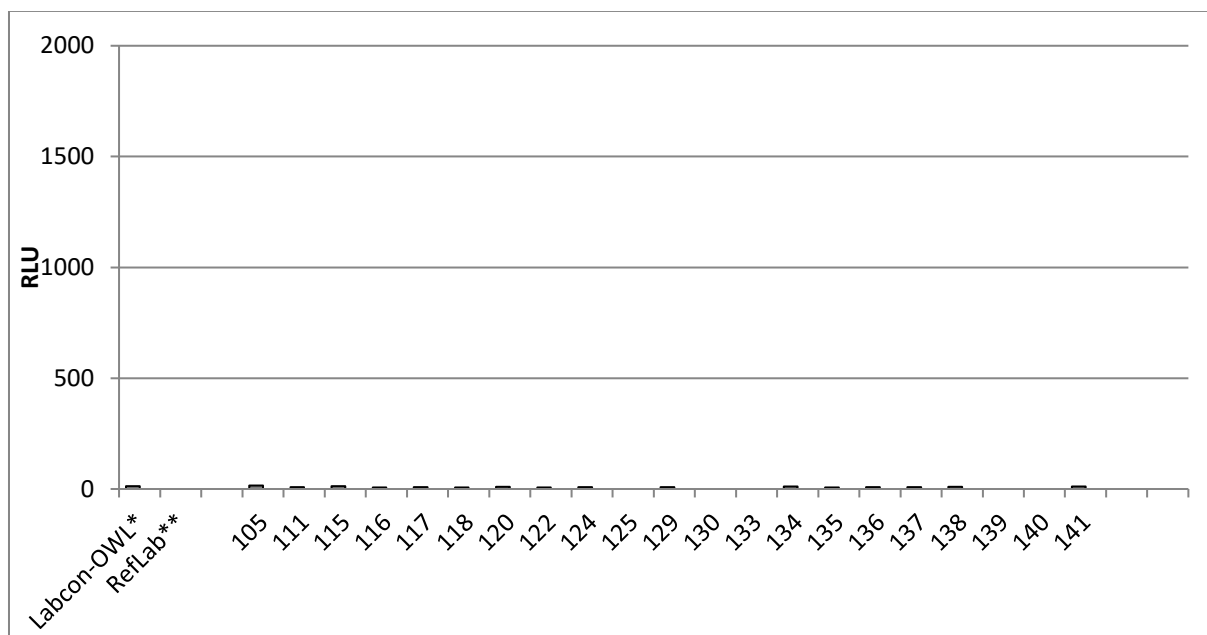


Overview EQA II/2020

Sample 2020-05: CT negative / NG negative

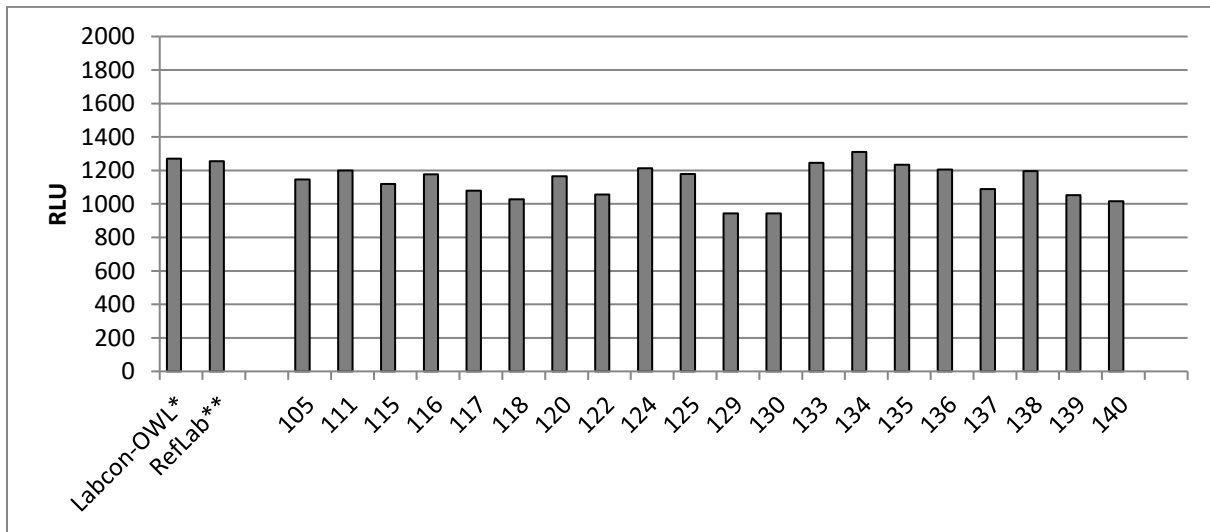


	RLU Panther
LABCON-OWL*	12
RefLab**	0
105	15
111	9
115	13
116	7
117	9
118	7
120	10
122	7
124	9
125	0
129	8
130	0
133	0
134	11
135	7
136	8
137	8
138	10
139	0
140	0
141	11

*RLU value constantly monitored over the entire testing phase of the external quality assessment by LABCON-OWL GmbH

**External Reference Laboratory in Germany

Sample 2020-06: CT positive / NG negative

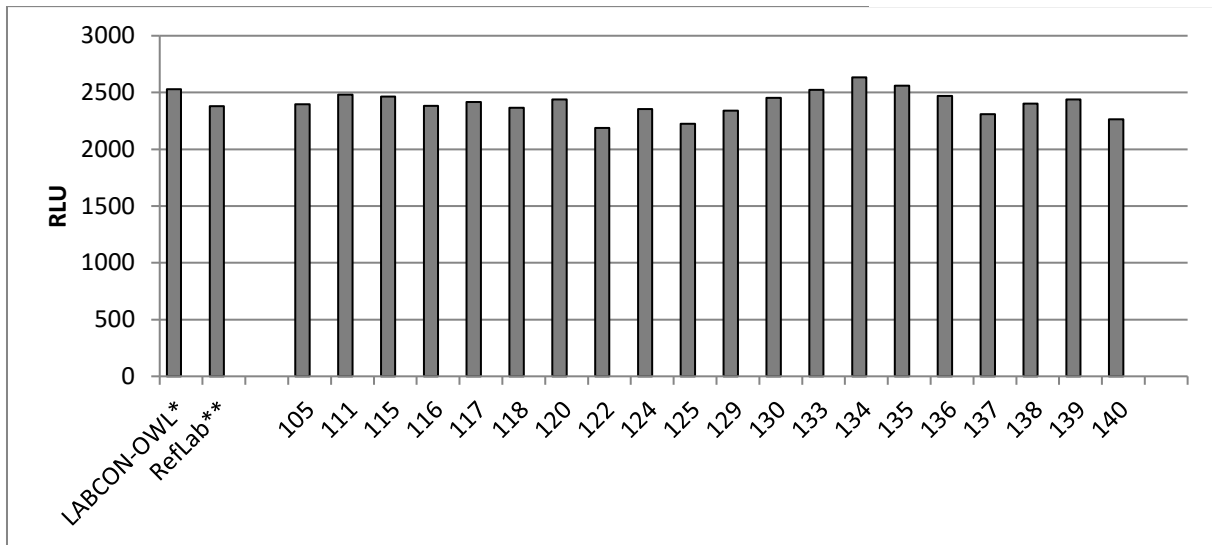


	RLU Panther
LABCON-OWL*	1270
RefLab**	1255
105	1146
111	1199
115	1120
116	1177
117	1079
118	1027
120	1165
122	1057
124	1214
125	1178
129	944
130	944
133	1245
134	1311
135	1235
136	1206
137	1089
138	1195
139	1052
140	1016
141	1071

*RLU value constantly monitored over the entire testing phase of the external quality assessment by LABCON-OWL

**External Reference Laboratory in Germany

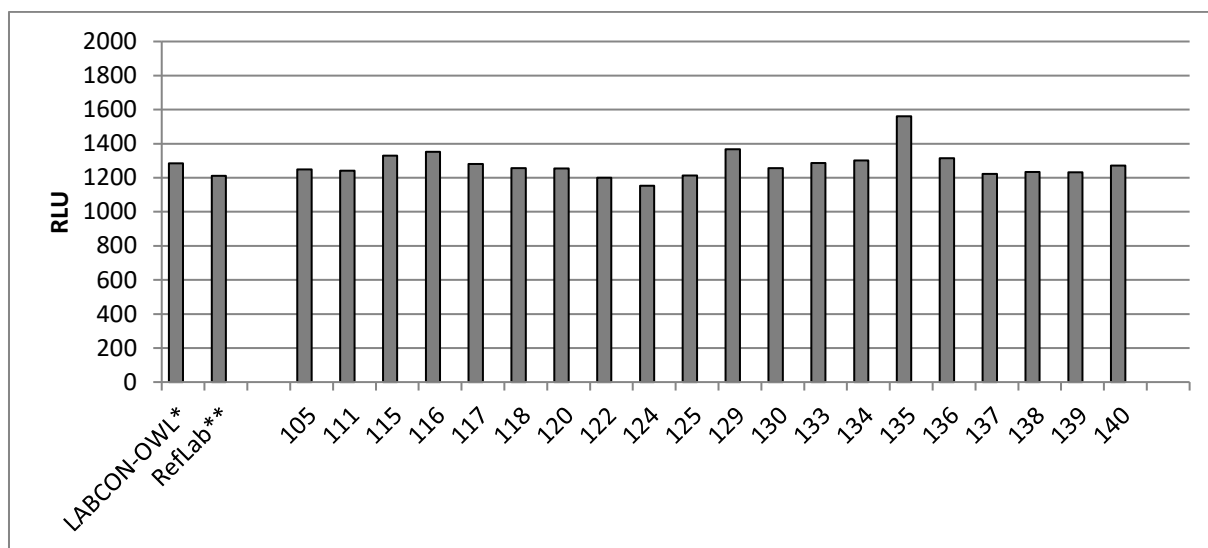
Sample 2020-07: CT positive / NG positive



	RLU Panther
LABCON-OWL*	2529
RefLab**	2379
105	2398
111	2481
115	2463
116	2383
117	2415
118	2365
120	2438
122	2189
124	2354
125	2226
129	2340
130	2453
133	2523
134	2634
135	2561
136	2469
137	2309
138	2402
139	2438
140	2265
141	2307

*RLU value constantly monitored over the entire testing phase of the external quality assessment by LABCON-OWL
 **External Reference Laboratory in Germany

Sample 2020-08: CT negative / NG positive

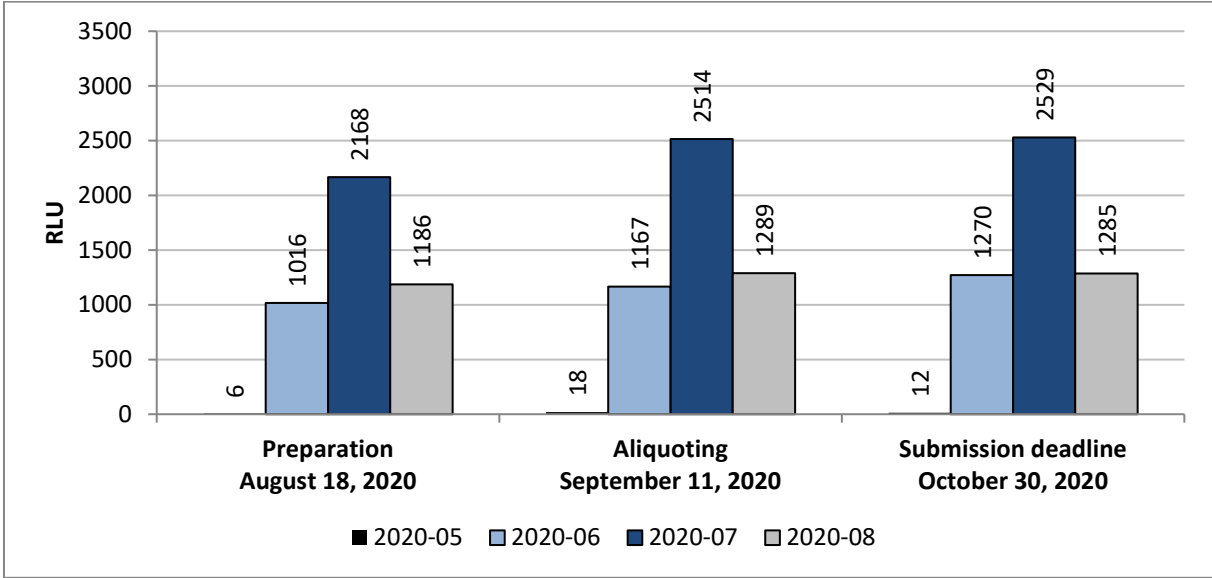


	RLU Panther
LABCON-OWL*	1285
RefLab**	1211
105	1249
111	1241
115	1329
116	1353
117	1280
118	1257
120	1254
122	1200
124	1153
125	1213
129	1367
130	1257
133	1287
134	1301
135	1561
136	1315
137	1223
138	1234
139	1232
140	1271
141	1243

*RLU value constantly monitored over the entire testing phase of the external quality assessment by LABCON-OWL

**External Reference Laboratory in Germany

Appendix: Stability of the samples over the period of the external quality assessment



RLU values determined over the period of the external quality assessment by LABCON-OWL

The target value of all samples was confirmed and monitored in a reference laboratory in Germany before distribution. During the testing period the samples were retested two times by LABCON-OWL. The data are illustrated above. This graph shows the course of signal change for all four panel members over a period of nine weeks (storage at room temperature).